

Imagine where medical device data can take you

Current state is reactive care

With today's traditional tools, caregivers have limited insights on the current state of the patient



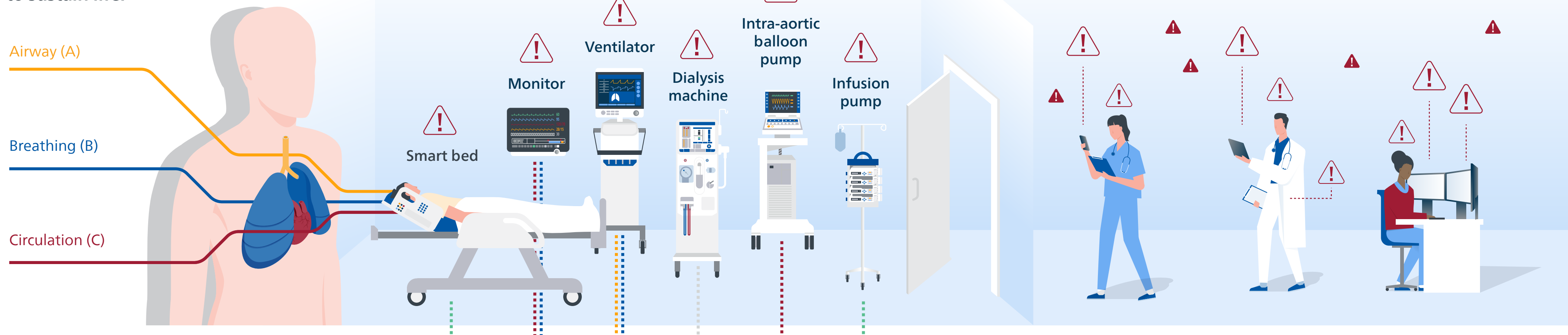
Irrelevant device alarms are a threat to patient safety

Research indicates that between **87% and 95% of alarms are non-actionable**¹

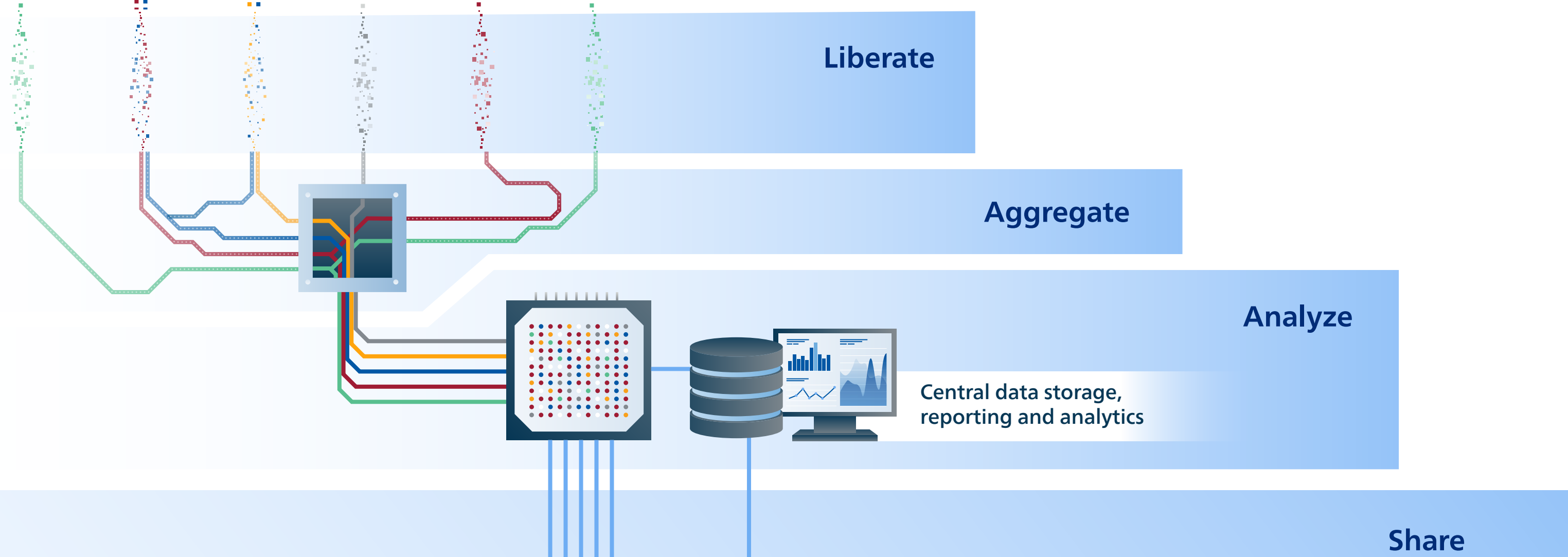
inefficient

fatigue inducing

Medical devices monitor the essentials (ABCs) required to sustain life:

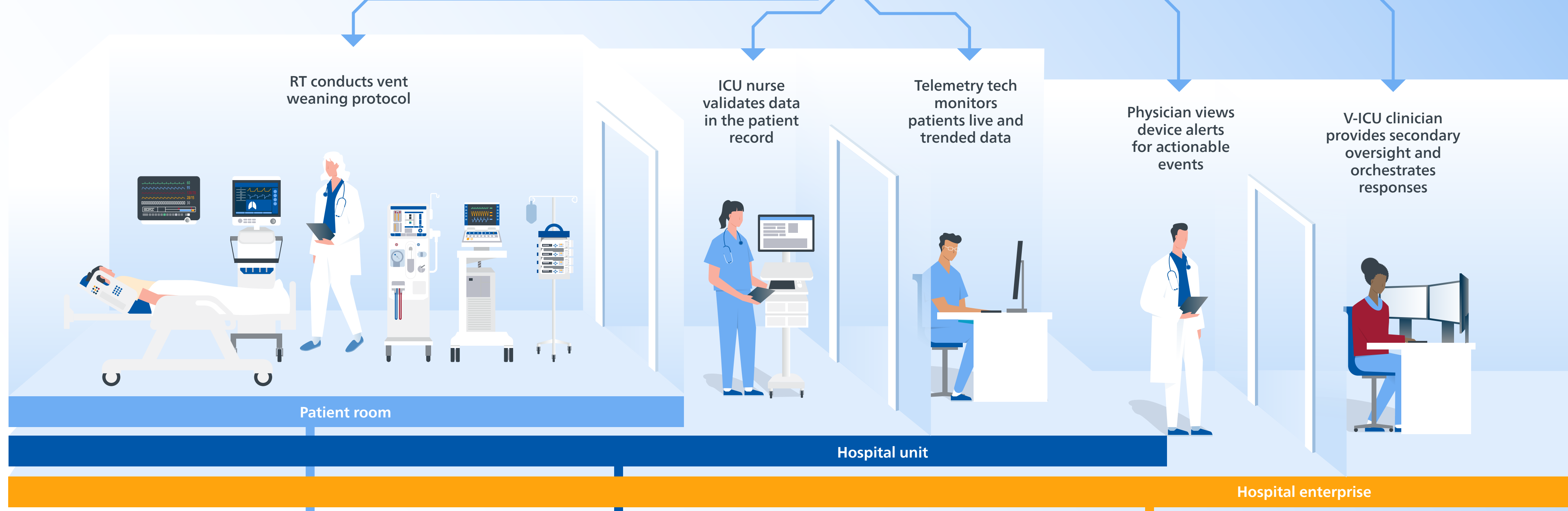


A better way to leverage medical device data



Future state is proactive care

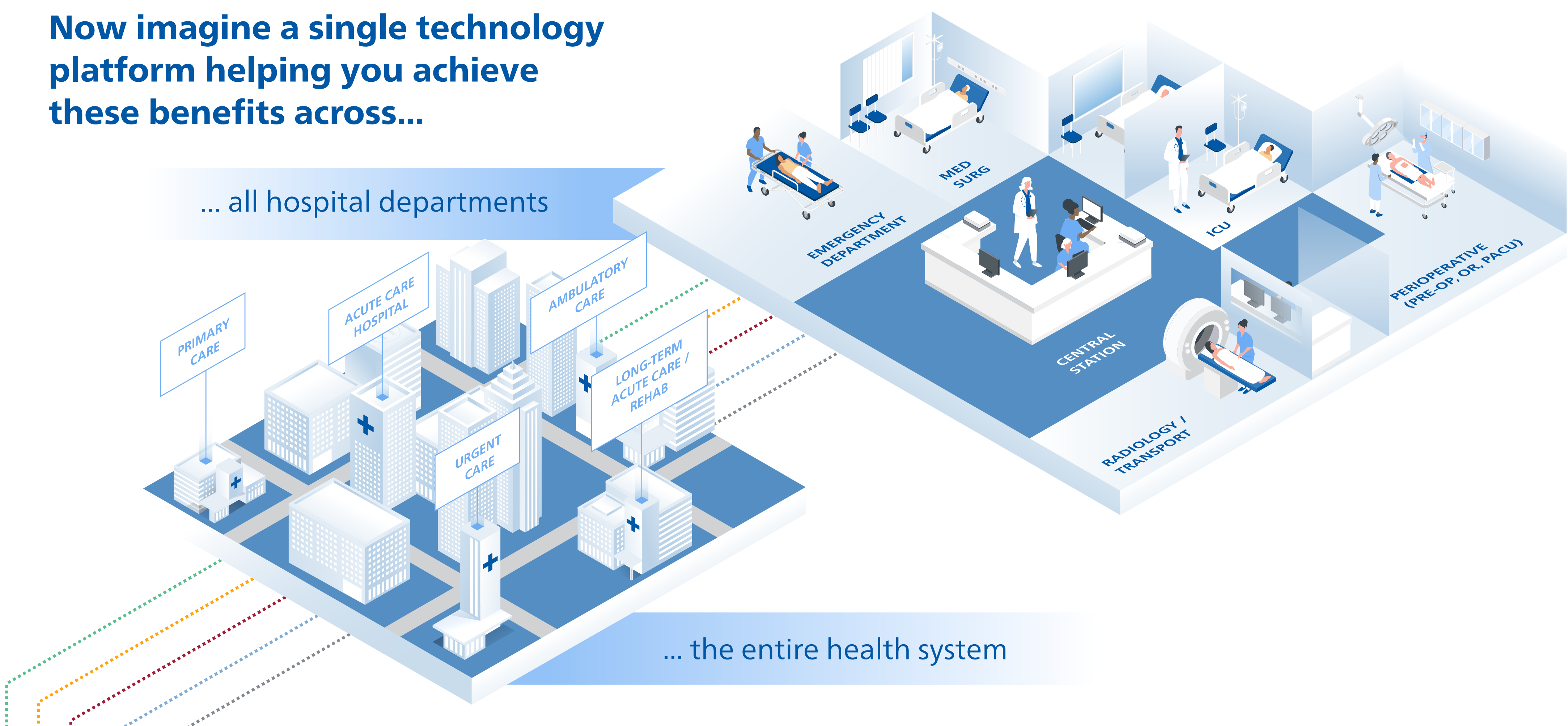
Leveraging medical device data, care providers and staff prioritize and coordinate interventions and activities



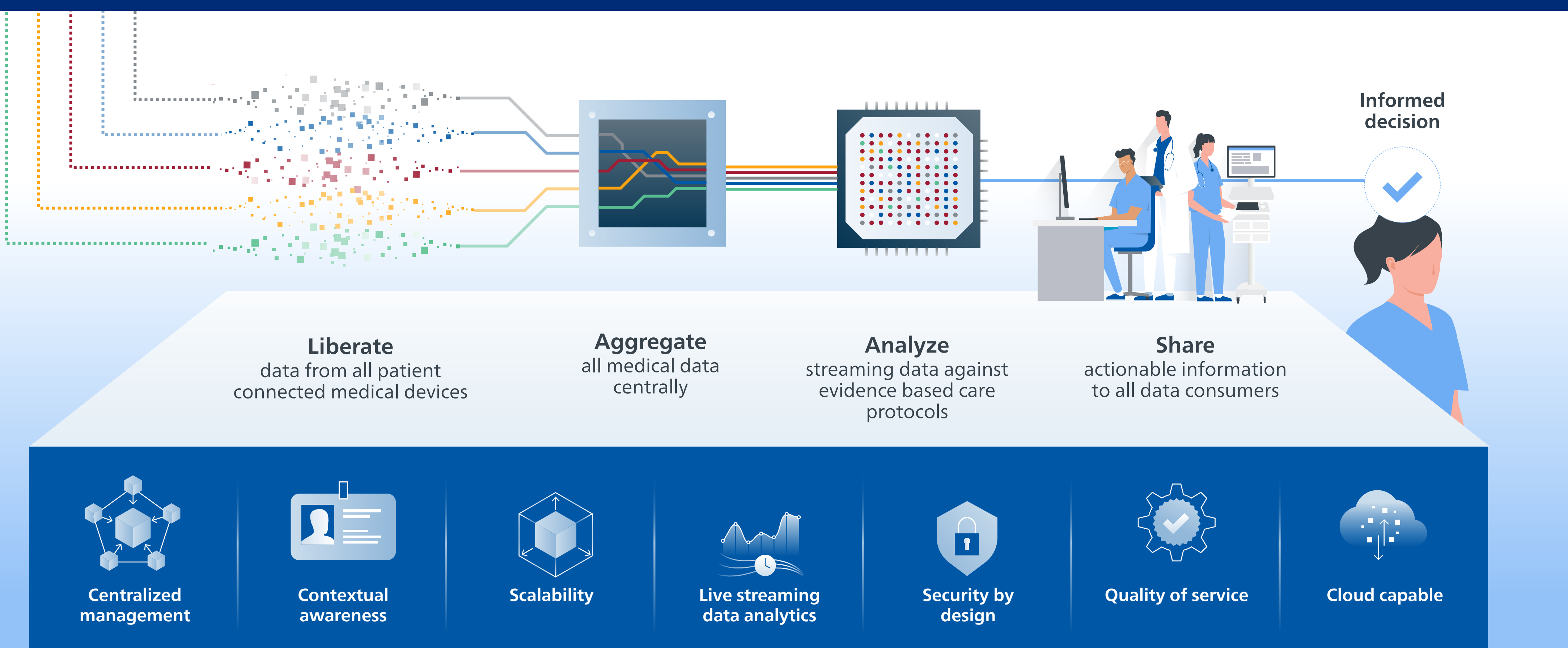
Benefits

	Patient room	Hospital unit	Hospital enterprise
Caregivers	↑ Supports caregiver attention	↑ Supports patient oversight ↓ Unnecessary visits	↑ Supports caregiver oversight ↓ Alarm fatigue
Clinical leadership	↑ HCAHPS scores	↑ Reach of staff ↑ Clinical effectiveness	↓ PPE Use ↓ ICU transfers ↓ Length-of-stay ↓ Code Blue ↑ Staff retention
Patient	↑ Patient satisfaction ↑ Restful patients		↓ Length-of-stay

Now imagine a single technology platform helping you achieve these benefits across...



capsule Medical Device Information Platform



One platform. Countless benefits. Making the complex simple and the simple insightful.

¹ Ruppel, H; Funk, M; Whittemore, R. Measurement of Physiological Monitor Alarm Accuracy and Clinical Relevance in Intensive Care Units. Am J Crit Care (2018) 27 (1): 11–21. <https://doi.org/10.4037/ajcc2018385>